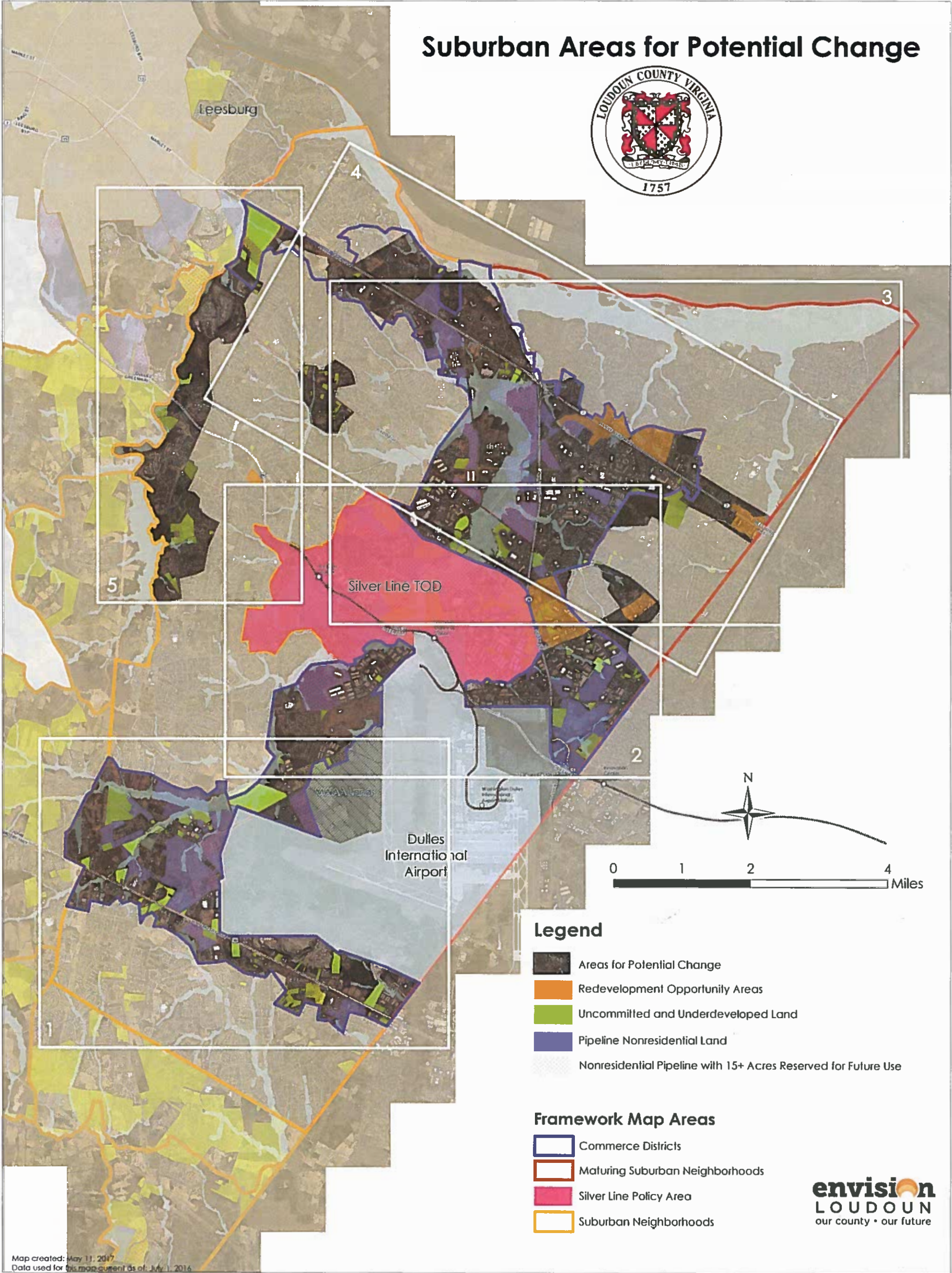
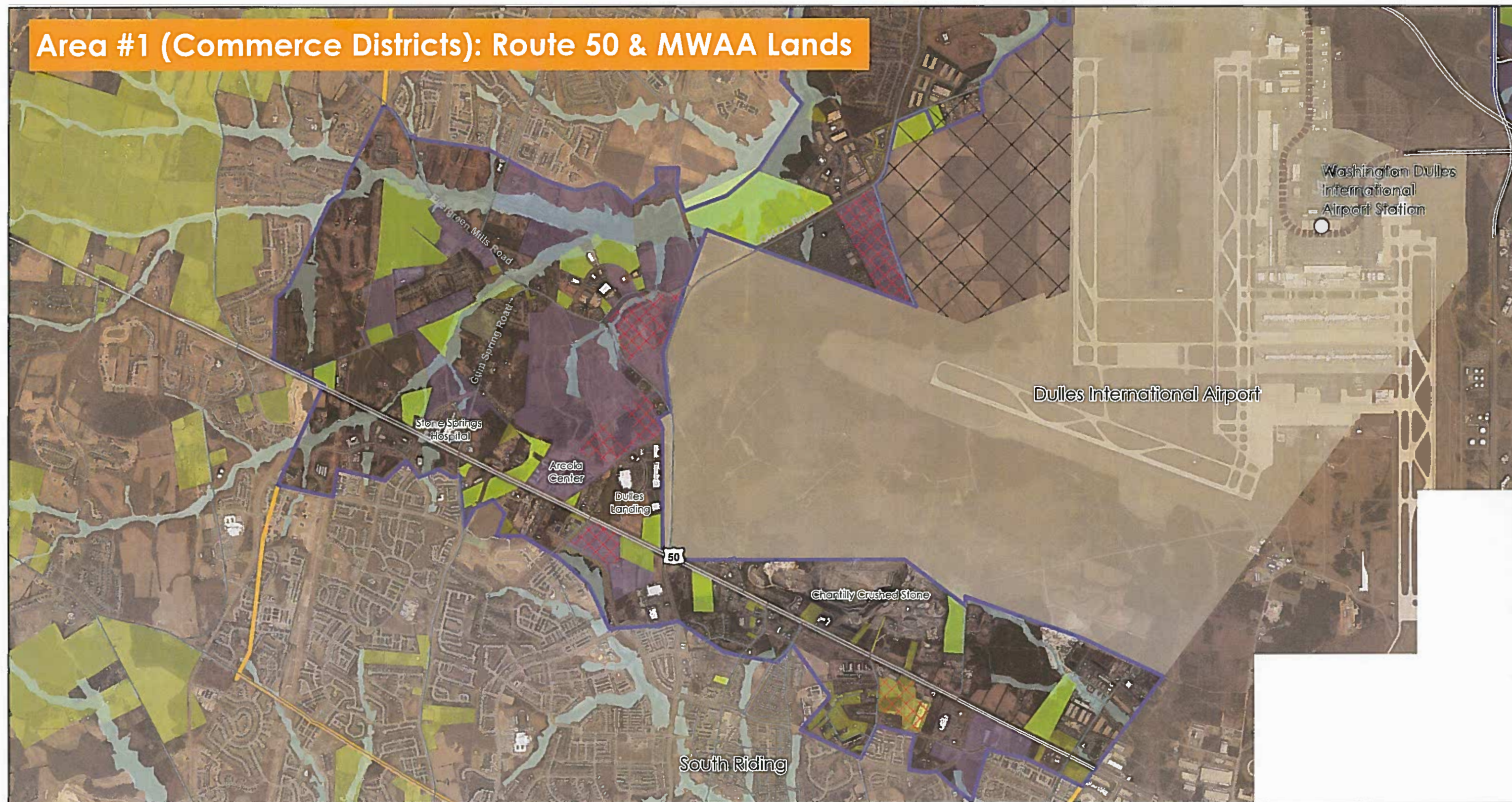


# Suburban Areas for Potential Change



# Area #1 (Commerce Districts): Route 50 & MWAA Lands



## Legend

- Areas for Potential Change
- Redevelopment Opportunity Areas
- Uncommitted and Underdeveloped Land
- Pipeline Non-Residential Land
- Pipeline with 15+ Acres Reserved for Future Use
- Dulles-MWAA Western Lands

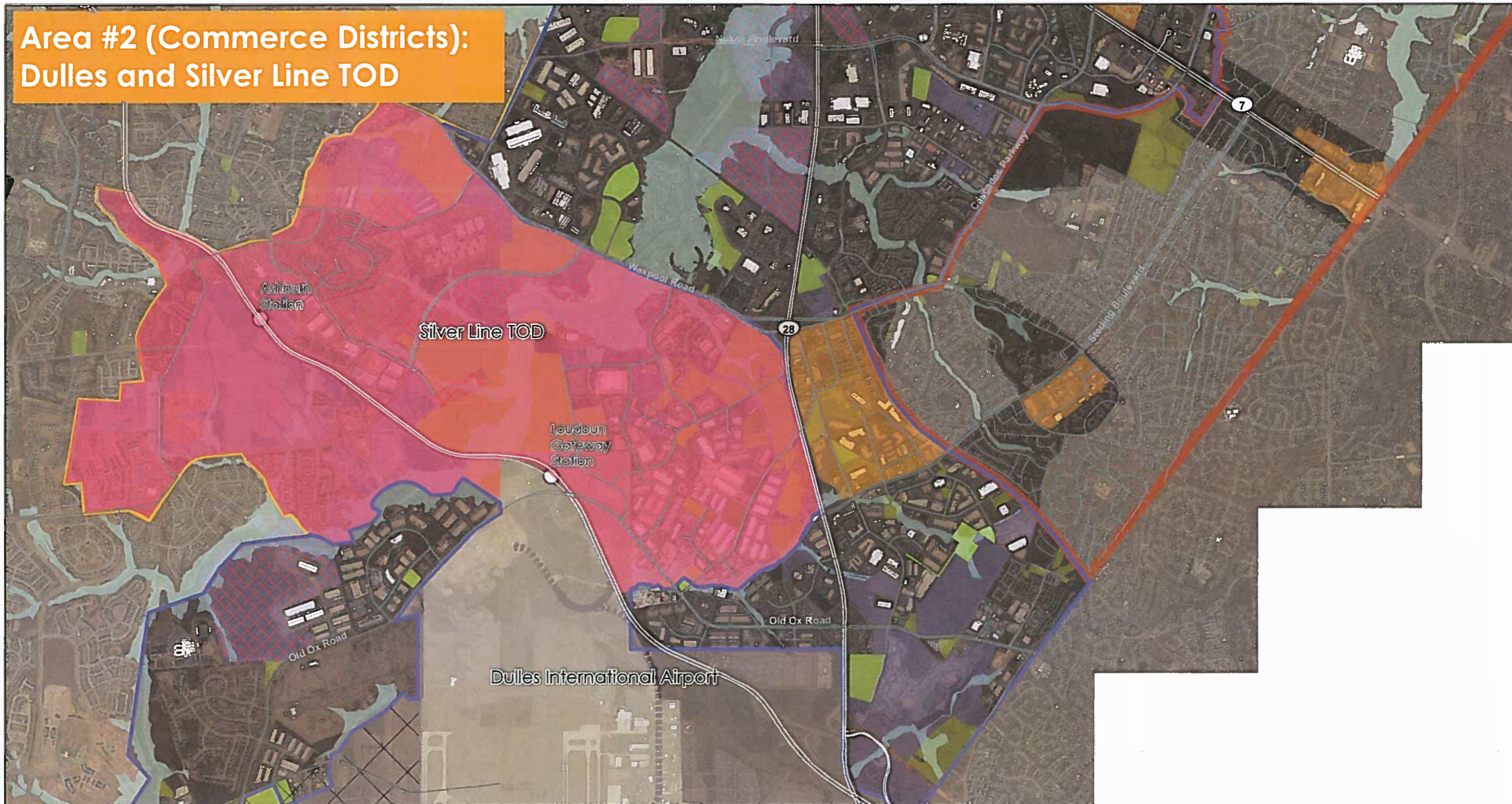
0 0.25 0.5 1 Miles



**envision**  
LOUDOUN  
our county • our future

May 11, 2017  
Data Current as of July 2017

# Area #2 (Commerce Districts): Dulles and Silver Line TOD



## Legend

- |   |                                     |   |   |
|---|-------------------------------------|---|---|
|  | Areas for Potential Change          |  | Pipeline Non-Residential Land                   |
|  | Redevelopment Opportunity Areas     |  | Pipeline with 15+ Acres Reserved for Future Use |
|  | Uncommitted and Underdeveloped Land |  | MWAA Western Lands                              |

0 0.25 0.5 1  
Miles



**envision**  
LOUDOUN  
our county • our future

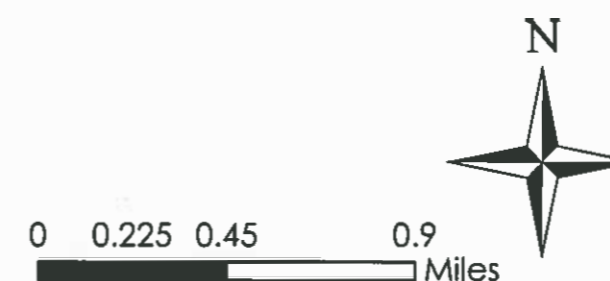
May 11, 2017  
Data Current as of July 2017

# Area #3: Route 28 Commerce Districts



## Legend

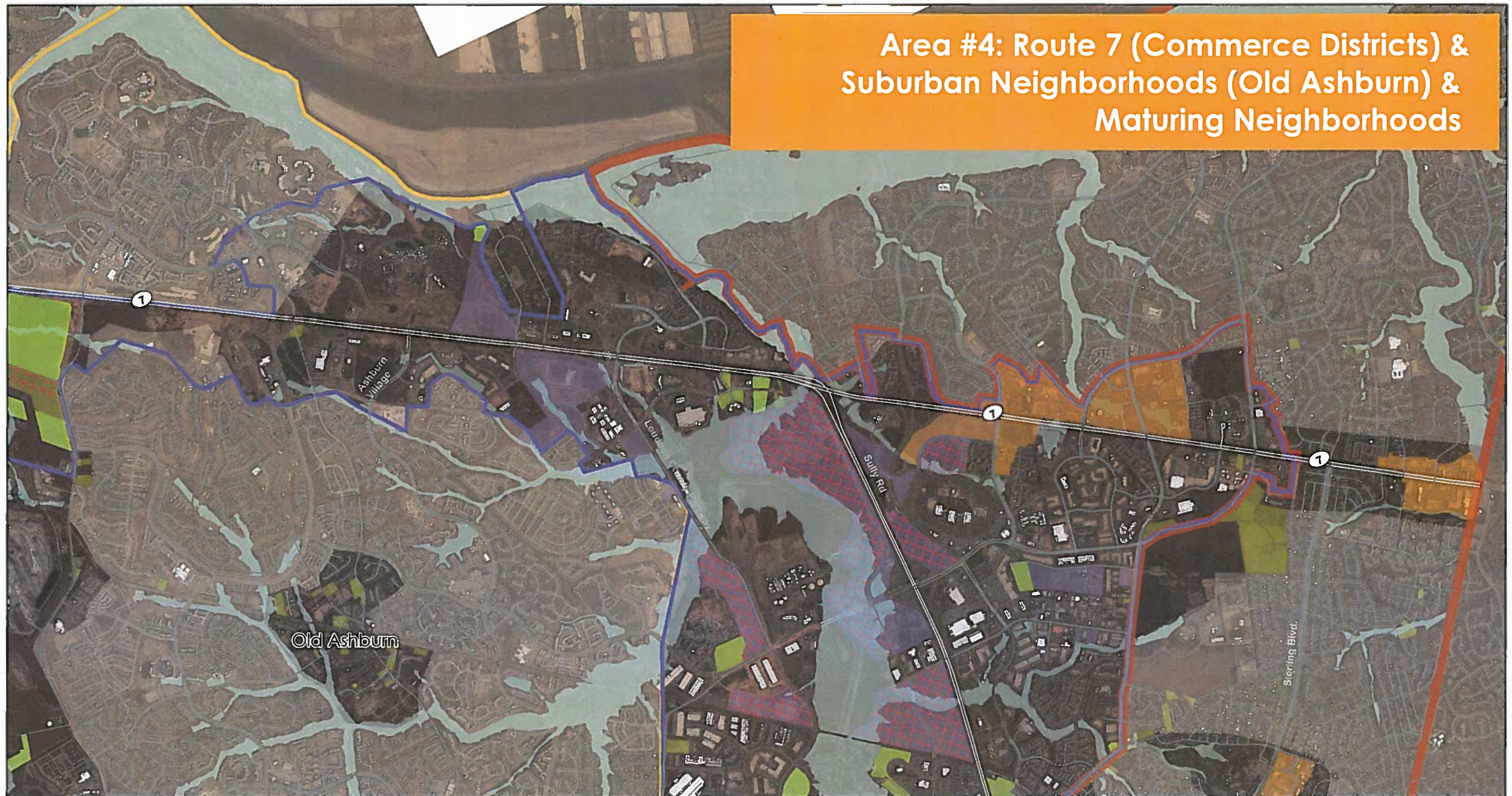
- |   |                                     |   |   |
|---|-------------------------------------|---|---|
|  | Areas for Potential Change          |  | Pipeline Non-Residential Land                   |
|  | Redevelopment Opportunity Areas     |  | Pipeline with 15+ Acres Reserved for Future Use |
|  | Uncommitted and Underdeveloped Land |  | MWAA Western Lands                              |



**envision**  
LOUDOUN  
our county • our future

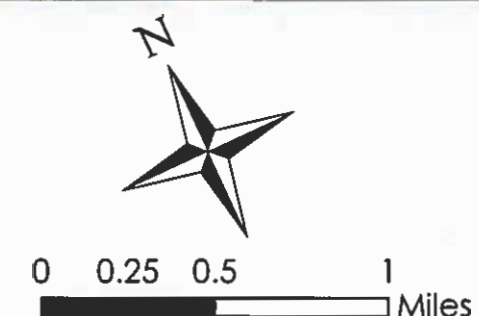
May 11, 2017  
Data Current as of July 2017

# Area #4: Route 7 (Commerce Districts) & Suburban Neighborhoods (Old Ashburn) & Maturing Neighborhoods



## Legend

- Areas for Potential Change
- Redevelopment Opportunity Areas
- Uncommitted and Underdeveloped Land
- Pipeline Non-Residential Land
- Nonresidential Pipeline with 15+ Acres Reserved for Future Use



**envision**  
LOUDOUN  
our county • our future

May 11, 2017  
Data Current as of July 2017

# Area #5: Suburban Neighborhoods & Old Ashburn



0 0.25 0.5 1 Miles



## Legend

- |  |  |
|--|--|
|  Areas for Potential Change          |  Pipeline Non-Residential Land                   |
|  Redevelopment Opportunity Areas     |  Pipeline with 15+ Acres Reserved for Future Use |
|  Uncommitted and Underdeveloped Land |  MWAA Western Lands                              |

**envision**  
**LOUDOUN**  
our county • our future

May 11, 2017  
Data Current as of July 2017